



# AgPilotX

by insero

## A New Generation of Guidance

### Apple-Based

AgPilotX drives the Guidance System through any Apple device. Wirelessly connect to the Lightbar and Hub. View your spray screen with imagery background (Apple Maps).



### Wireless

Connect switches, meter and valve to the hub. No more bulky cables and oversized connectors – all cables can be cut to length so no more extra cables in the aircraft.



### GNSS Guidance

Wireless Lightbar with GNSS (GPS + GLONASS) and Antenna built in. Completely wireless communication. Lightbar only needs power and ground.



### Optional Live Tracking

Track aircraft from anywhere through the cell modem of the Apple device. Simply connect your iPad to a cell carrier and login to AgHippo LIVE. Instantly send files from any location to AgPilotX.



### Flow Control

Built in flow control and auto boom available. Use your existing meter and valve or upgrade to our Electromagnetic Meter (No moving turbine).



View data with **AgHippo** desktop software. Review and print your log over background imagery and/or create Shape files for use in AgPilotX.



**Insero**

3928 S. Dorsey Lane Tempe, AZ 85282  
sales@inerosolutions.com

**Anthony Fay**

480-285-4367 (mobile)  
anthonyfay@inerosolutions.com

[www.AgPilotX.com](http://www.AgPilotX.com)

# AgPilotX "Smart" Components

AgPilotX consists of 3 "Smart" Components and just a few cables. AgPilotX components are considered "Smart" because 1) they each have a dedicated internal computer, 2) they are wireless and 3) they are designed to be self-sufficient - they do not require any other component to do their job. Indeed, they function as independent devices.

## 1) Smart Lightbar (with integrated GPS/GNSS)



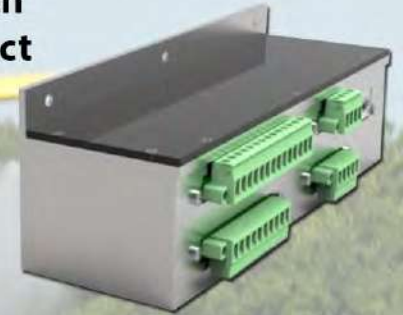
The AgPilotX Smart Lightbar provides guidance and has the GPS/GNSS onboard. It also includes the GPS/GNSS Antenna so there is no need to run an antenna up to the aircraft canopy. All data is initially stored in the Lightbar and can be moved in a number of ways (to a USB stick or wirelessly to an iPad/iPhone or even pushed directly to the cloud).

Insero's GPS/GNSS receiver also uses GLONASS satellites, doubling the number of satellites wherever the aircraft is flying. This is especially helpful when satellite coverage is spotty at certain times of the day or in particular areas.



## 2) Smart HUB

The small Hub provides a location to connect switches and devices. Aircraft swath advance/decrease switch, spray on/off and even the Laser Altimeter wires connect here. The Smart Hub also serves as the Flow Controller. Connect the meter and valve to the Hub. No additional boxes necessary.



No more bulky canon plugs. Connect all wiring directly to the back of the removable connectors in the Hub. No more drilling large holes in the aircraft to feed oversized connectors.

## 3) iPad



Insero provides an iPad Pro with the AgPilotX. Although there is no limitation on what Apple device is used, Insero recommends the iPad Pro for its high brightness, increased processing power and superior handling of heat. However, feel free to use any Apple device - just download the AgPilotX app, free from the Apple store.

Apple delivers software updates right to the device. When Insero has updates for the Lightbar, receive a message on the device and a button appears on the Start screen. Press it and the system updates in seconds. No more worrying about unzipping files or using outdated software.



**Stop reading. That's it! There's nothing else to it...3 components and just a few wires!**

Remember that ALL AgPilotX components are "Smart". The Lightbar does not require the iPad to operate. If something happens to the screen, you can still finish the job without the display.



Add real time tracking to any AgPilotX System. Login at the Apple device in the aircraft and you can view any number of aircraft in real time from the office or from any mobile device. Track ETAs or just know how much is getting done each day by each aircraft.

AgPilotX installs in just a few hours. Total weight is about xx lbs.  
Ask about Insero's lightweight version being released for helicopters later this year.

Experience  AgPilotX A New Generation of Guidance